



Manhattan Community Center

Draft Plan + Renderings
April 1, 2026

PROSPERA

M
Senior
Center
Manhattan, MT

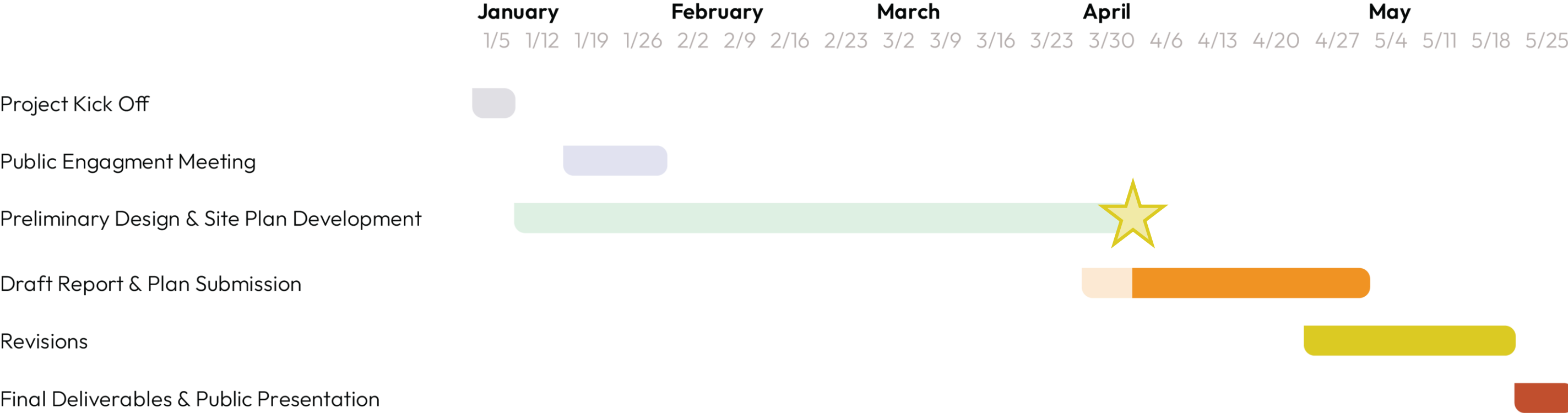
TOWN OF
MANHATTAN
Heart of the Gallatin Valley MONTANA

45 ARCHITECTURE
& INTERIORS


Manhattan Community Library

1. Project Schedule
2. Preliminary Site Plan
3. Preliminary Floor Plan
4. Draft Renderings
5. Next Steps

Project Schedule



Site Plan

Zoning

Low Density Residential District

Max Building Height = 26'

Yard Setbacks
Front = 25'
Rear = 10'
Side = 8'



Challenges, Aspirations, + Impact

Why are you undertaking this project?

Limited public spaces

Community Library needs a space separate from the school

Social/political will exist to make it real!

Create a **shared community space** that can support strong local relationships and **connect generations**

What are your aspirations for this project?

A deeper sense of community and increased community involvement

A community space that serves the whole community, not just one group

A space that works with and enhances the park

Rentable rooms create a source of income for the town

Warming space in the winter, cooling space in the summer

Create a **community anchor** to build from for **generations**

How might we measure a successful outcome?

of public or private gatherings

of meals served

of books read

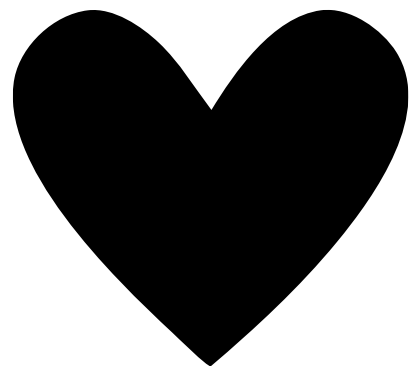
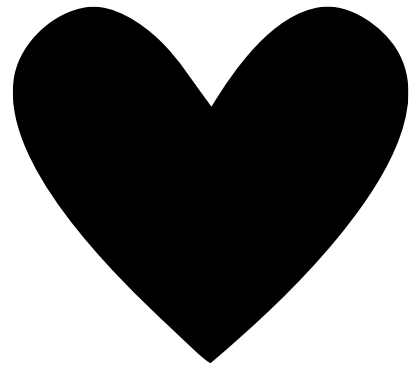
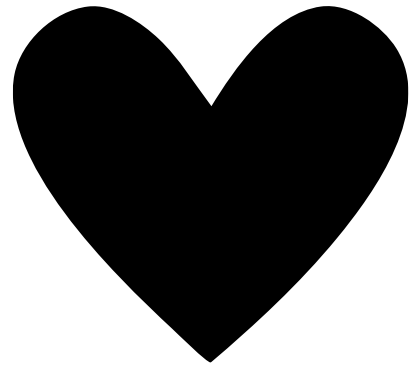
of different groups using the space

Community support

Destination for all ages, a 'hub' for the community

Do people use the space?

Design Goals



Create spaces for **connection to happen across generations** -

Less transactional experience - more community focused

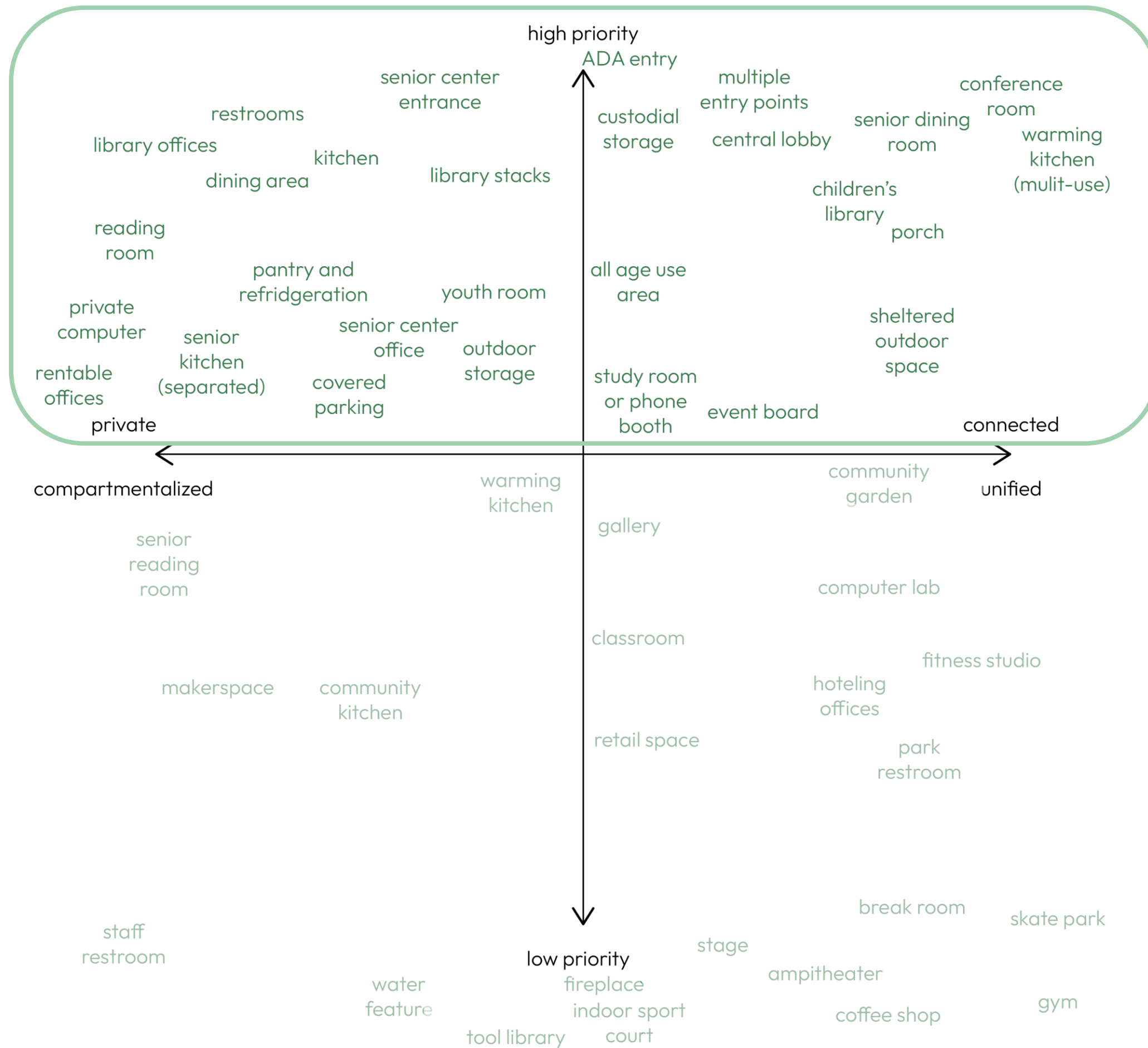
Modest + honest architecture that **inspires community pride**

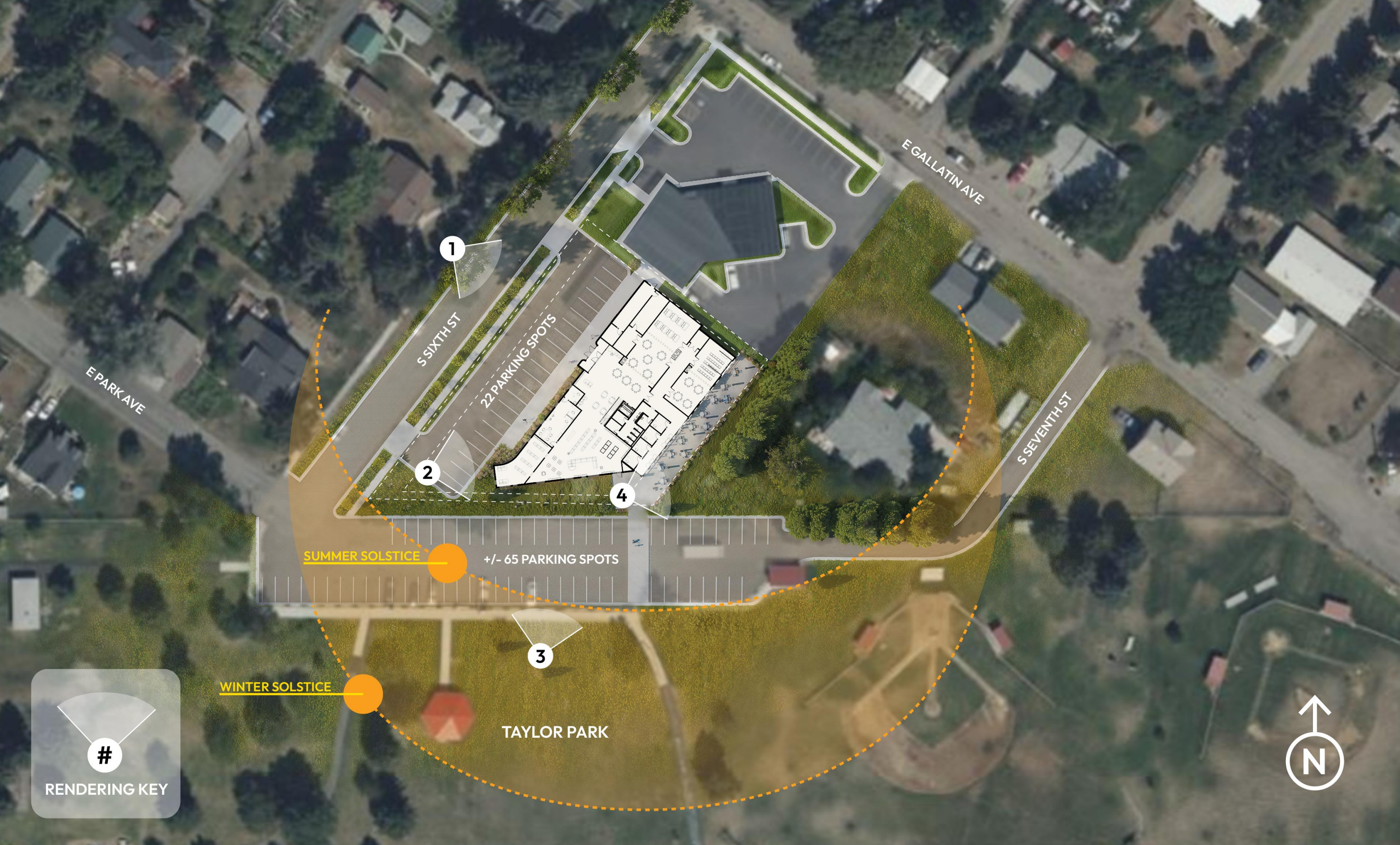
Make **the library** the focal point of the building

Design building systems so the building can serve as a **cooling space** in the summer

Design for **acoustic performance** to create quiet workspaces and gathering spaces for groups where speech remains intelligible for all

Program Priorities





E PARK AVE

1
S SIXTH ST

22 PARKING SPOTS

E GALLATIN AVE

S SEVENTH ST

SUMMER SOLSTICE

+/- 65 PARKING SPOTS

WINTER SOLSTICE

3
TAYLOR PARK

RENDERING KEY



Program

Level 1

Community Center	
Meeting Room	724 SF
Meeting Room	571 SF
Meeting Room	559 SF
Rentable Office	99 SF
Rentable Office	98 SF
Rentable Office	98 SF
Rentable Office	100 SF
subtotal	2250 SF

Library	
Office	100 SF
Work Room	500 SF
Children's Library	2582 SF
Young Adult	672 SF
subtotal	3855 SF

Senior Center	
Office	120 SF
Pantry	366 SF
Serving	214 SF
Kitchen	349 SF
Dining Room	723 SF
subtotal	1772 SF

Service	
Storage	98 SF
RR	296 SF
RR	64 SF
RR	67 SF
Custodial	63 SF
subtotal	586 SF

Shared	
Lobby	929 SF
Elevator	67 SF
Vestibule	171 SF
Hall	992 SF
subtotal	2159 SF

Level 1 subtotal 10622 SF

Level 2

Community Center	
Study Room	61 SF
Study Room	61 SF
Study Room	61 SF
Study Room	61 SF
Lounge	693 SF
Meeting Room	370 SF
subtotal	1306 SF

Library	
Adult Library	1865 SF
subtotal	1865 SF

Service	
RR	59 SF
Mechanical / IT	460 SF
RR	56 SF
subtotal	575 SF

Shared	
Hall	234 SF
Elevator	67 SF
subtotal	300 SF
Level 2 subtotal	4046 SF

Building total 14669 SF





Material Palette



1









Next Steps

Massing + Materials

March 11

- review preliminary site and floor plans
- review preliminary 3D form studies
- review preliminary building materials palette

Draft Plan + Renderings

April 1

- review any updates to draft site and floor plans, elevations
- review draft exterior building perspectives
- submitted to KJF Cost Studio for initial cost check (cost range)

Draft Report

May 6

- incorporate feedback from previous meeting
- adjust based on initial cost range
- Submit to KJF Cost Studio for construction cost estimate



Final Deliverables

May 25

- present final renderings and recommendations with drawings, narrative, and construction cost estimate



Alternative Materials





April 1, 2026



Manhattan Community Center | Meeting 3



Thank you!